

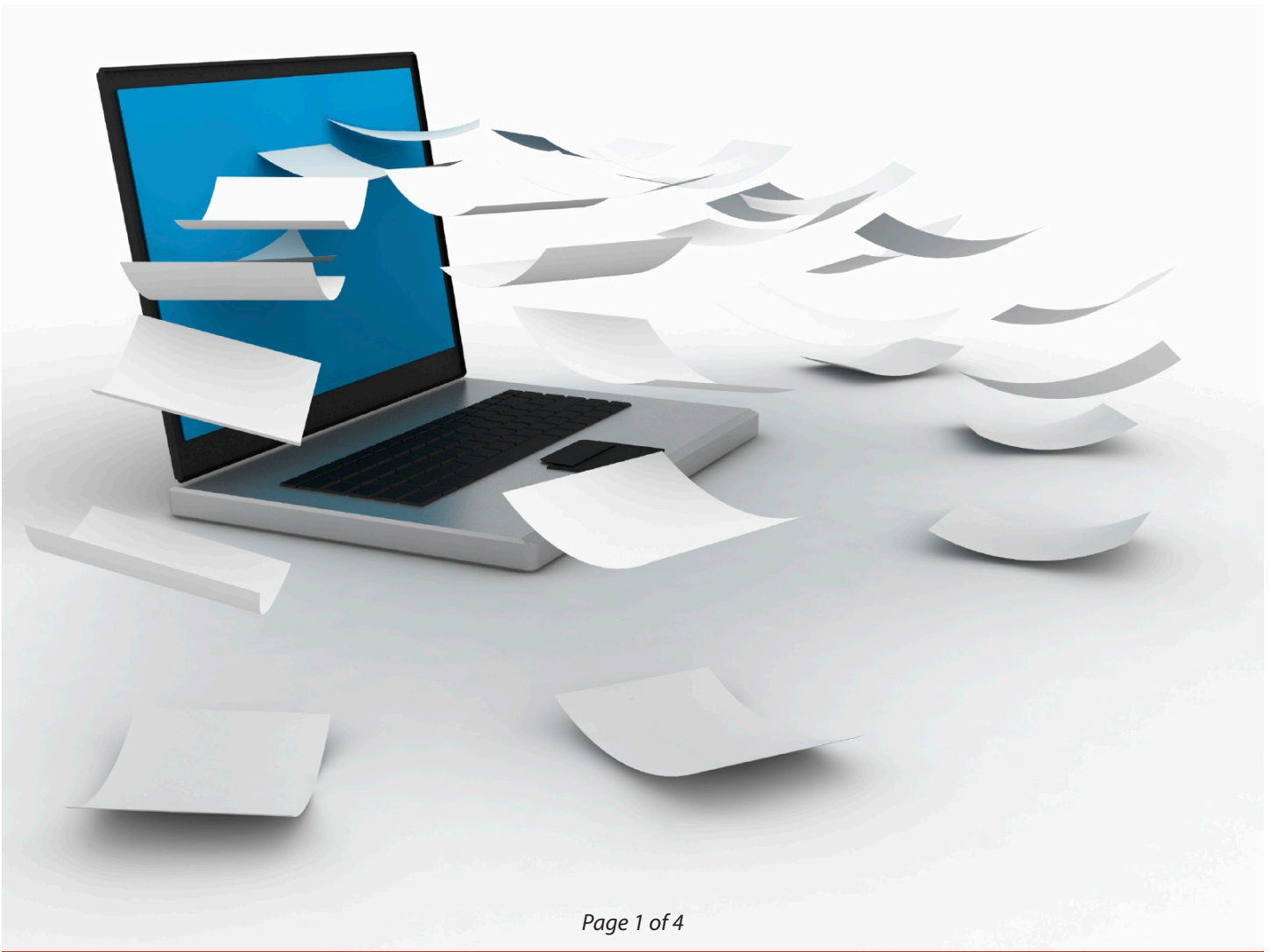
County Government Application Overview Guide



County Government Application Overview Guide

Introduction

The Doculivery system is what's typically known as "Software as a Service (or SaaS, typically pronounced 'Sass'). This type of system can be described as an application that is hosted by a service provider to customers across the Internet. One of the many benefits of this system is it allows customers to eliminate the need to install and run the application on the customer's own computer, SaaS alleviates the customer's burden of software maintenance, ongoing operation, and support. Using SaaS also eliminates the up-front expense of software purchases, through less costly, on-demand pricing. And because doculivery is completely web based, our customers also eliminate all up front capital expenses.



County Government Application Overview Guide



General System Overview

The Doculivery system is a completely web-based system. The entire system and infrastructure is maintained and supported at National Payment's secured computer facility. The details of our computer facility are available in our Technical White Paper available upon request.

The Doculivery system is composed of two base components. The first is the Data/Document Input component for scanning and entering the documents. The second component is the Research and Retrieval Component which is used for research of the archived documents.

All the workstations for the Data/Document input component or the Research and Retrieval component are platform independent. The only system requirement is a JavaScript enabled browser.

All of the document images and associated information is stored on site at National Payment's secured computer facility which requires access by PIN code, authorized thumb-print biometrics, and computer-coded key cards for entry. The facility is monitored on site and fully

videotaped and recorded. The customer is not required to maintain any equipment for storage or access.

All of the documents are available at the time of submission since the system runs in real time.

All of the stored information is duplicated in real time as one option for secure backup procedures. Another alternative is using NatPay's snapshot protocol, which backs up the data in its entirety based on a scheduled interval. This provides the users with rollback points for ease of recovery.

All of the data transfer and retrieval is done with maximum security encryption, or SSL 3.0. The documents will reside in a secured facility via encrypted SQL databases. Our storage technology is based on isolated SAN's, incapable of being accessed externally.

System changes or additional customization requests occur in real time, without required service outages. The system is supported by fully redundant, high availability web farms. The system is fully load balanced and modular. If volume increases, additional equipment is simply added into the web farm availability pool.

County Government Application Overview Guide



Data/Document Input Component

1. Input Associate (IA) logs into NatPay's Hamilton County Customized web site using a platform independent web browser.
2. The IA can select from a customized list of data entry forms. Each form is for a designated document type. Alternately, the system can present the IA with a single form type with appropriate data input fields and pick lists so that the appropriate information is assigned to the document image.
3. The document is scanned.
4. The appropriate data input form is completed, including identifying the location of the scanned document on the IA's workstation.
5. The form is submitted for upload to the NatPay's Hamilton County web site.

Research and Retrieval Component

This component provides all the administration functions as well as research and retrieval.

User accounts and security are maintained in this component. User security can be assigned in such a way as to completely restrict and control the user experience. For example, a Data Input clerk can be designated as only having access from a certain computer during certain hours, and can only enter certain documents. Security is very granular. It can be applied as restrictive and secure as required by internal policy.

The system will allow retrieval of any document in the system based on a search of any information that is associated with this document. The system can also retrieve documents by time, date, or by the associate who performed the upload.

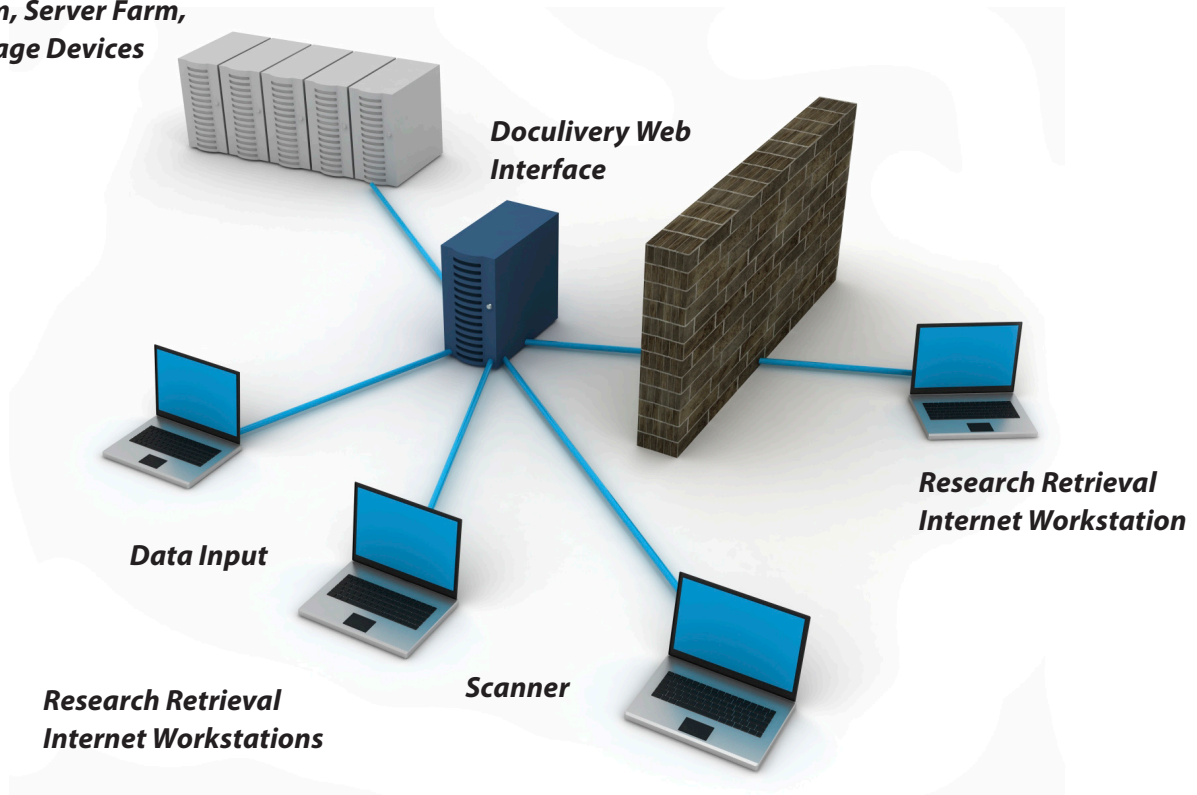
The system will allow electronic routing of any document based.

This component will allow management and/or administration to move information between users. This system can display the scanned documents or present them to the retriever as a file.

This system can retrieve statistics based on IA performance and productivity.

County Government Application Overview Guide

**Web Farm, Server Farm,
SAN Storage Devices**



Points of Interest

- The Doculivery system is able to restrict upload types based on individual user security levels.
- This system will be able to restrict uploads to certain workstations.
- This system will track and maintain information on who entered the form, where they entered the form, and the time the document was submitted. Any information entered with the document will also be available for research and retrieval from the Research and Retrieval component.
- This system is scanner independent. Specific scanners or image formats are not required. This will allow greater flexibility in equipment purchases and replacements and the selection of lower cost, readily available machinery.
- The system will also be able to flag a document as public or private.
- The scanned document can be routed to internal or external sites electronically, without printing or associated expenses.

Copyright and Disclaimer Notice

All information in this document is subject to copyrights owned by National Payment Corporation (NatPay). Any reproduction, retransmission, republication, or other use of all or part of this document is expressly prohibited, unless prior written permission has been granted by NatPay or the appropriate copyright owner. All other rights reserved.

The names, logos, trademarks, and service marks of NatPay that appear in this document may not be used in any advertising, publicity, promotion, or in any other manner implying NatPay's endorsement, sponsorship of, or affiliation with any product or service, without NatPay's prior express written permission.

In the preparation of the information contained in this document, NatPay has endeavored to make that information as accurate and current as possible. However, inadvertent errors can occur. Therefore, the information in this document is provided "as is," without any guarantee or warranty of any kind, expressed or implied.

*Copyright National Payment Corporation (NatPay).
All rights reserved.*